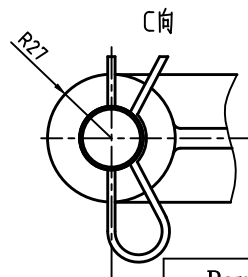
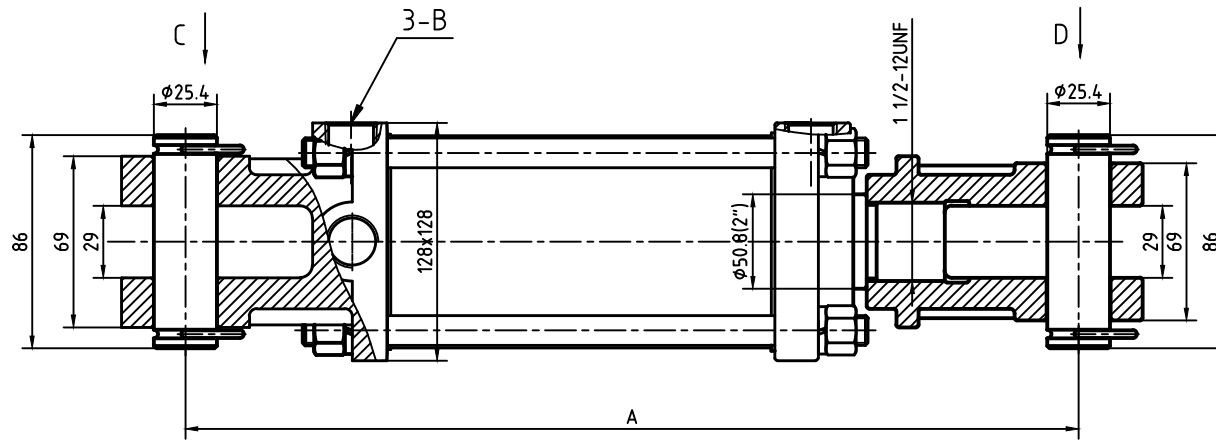
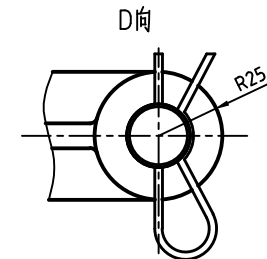


TECHNICAL DATA - Tie-rod Cylinders 4"



- Technical Specifications:
1. Bore: $\phi 101.6$ (4")
 2. Rod: $\phi 50.8$ (2")
 3. Stroke: XX
 4. Pressure of Working Pressure: 3000PSI



Part Number	Stroke	B	A
TR4008-200	203.2 (8")	G1/2	463.6 (18.25")
TR4010-200	254.0 (10")	G1/2	514.4 (20.25")
TR4012-200	304.8 (12")	G1/2	565.2 (22.25")
TR4014-200	355.6 (14")	G1/2	616.0 (24.25")
TR4016-200	406.4 (16")	G1/2	666.8 (26.25")
TR4018-200	457.2 (18")	G1/2	717.6 (28.25")
TR4020-200	508.0 (20")	G1/2	768.4 (30.25")
TR4024-200	609.6 (24")	G1/2	870.0 (34.25")
TR4030-200	762.0 (30")	G1/2	1022.4 (40.25")
TR4036-200	914.4 (36")	G1/2	1174.8 (46.25")



Hydra-Pack Gold
Quality Cylinders