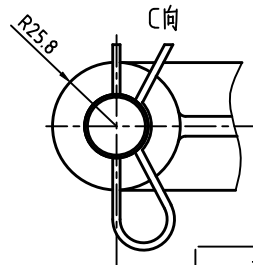
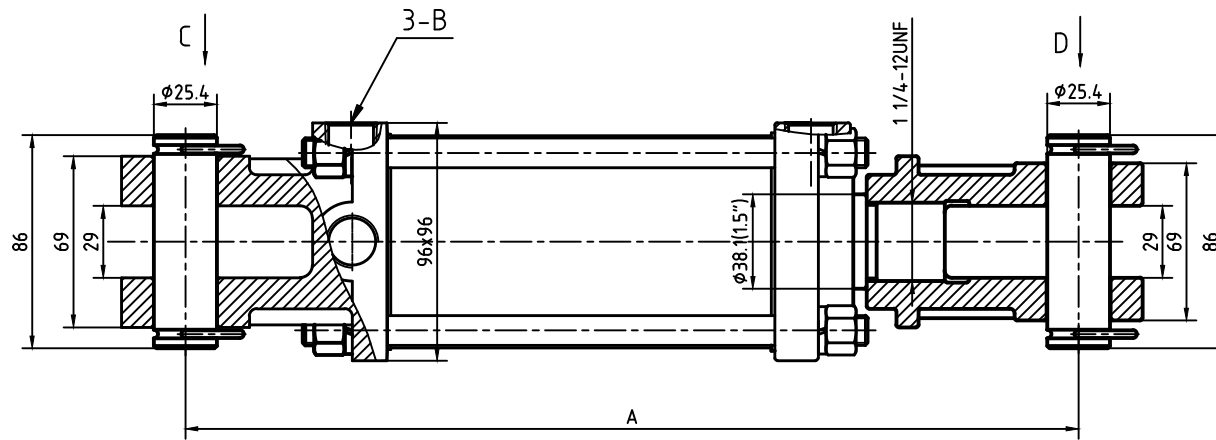
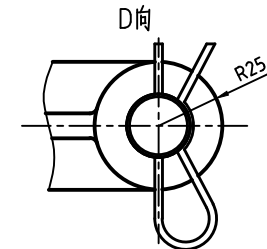


TECHNICAL DATA - Tie-rod Cylinders 3"



- Technical Specifications:
1. Bore: $\phi 76.2$ (3")
 2. Rod: $\phi 38.1$ (1.5")
 3. Stroke: XX 4.
 4. Working Pressure: 3000PSI



Part Number	Stroke	B	A
C-TR3010-150	254.0 (10")	G1/2	514.4 (20.25")
C-TR3012-150	304.8 (12")	G1/2	565.2 (22.25")
C-TR3014-150	355.6 (14")	G1/2	616.0 (24.25")
C-TR3016-150	406.4 (16")	G1/2	666.8 (26.25")
C-TR3018-150	457.2 (18")	G1/2	717.6 (28.25")
C-TR3020-150	508.0 (20")	G1/2	768.4 (30.25")
C-TR3024-150	609.6 (24")	G1/2	870.0 (34.25")
C-TR3028-150	711.2 (28")	G1/2	971.6 (38.25")
C-TR3030-150	762.0 (30")	G1/2	1022.4 (40.25")
C-TR3036-150	914.4 (36")	G1/2	1174.8 (46.25")



Hydra-Pack Gold
Quality Cylinders