



Q
k

QCPC SERIES HYDRAULIC QUICK COUPLINGS WITH PLASTIC CAPS & PLUGS

QCP Series Hydraulic Quick Couplings with dust & plugs are used in many agricultural and industrial fields.

Main feature of QCP Series Hydraulic Quick Couplings is having plastic dust caps and plugs protecting the system from dust and contamination.

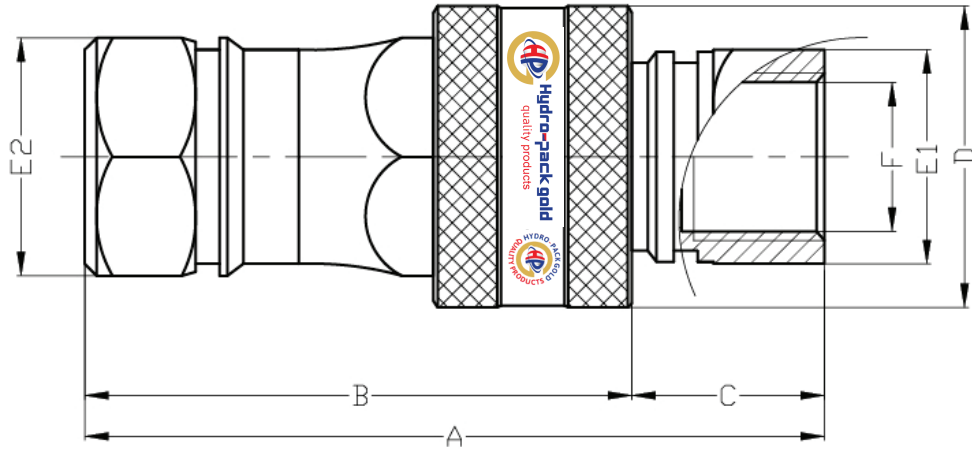
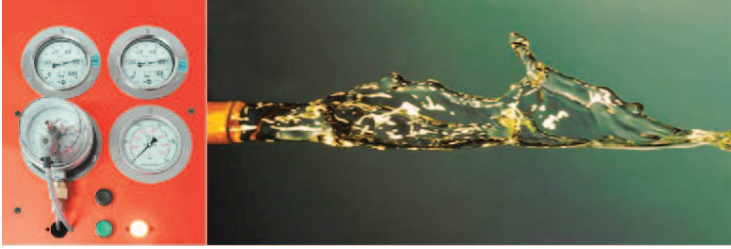
Interchangeability	ISO 7241-A
Shut-off System	Poppet Valve
Material	Carbon Steel
Thread Size	BSP (Upon Request: NPT, Metric)
Sealing	Nitrile O-ring (NBR)
Working Temperature	-30 °C and +110 °C
Plating	Zinc Plating (Cr III Passivation)
Connection System	Male nipple
Disconnection System	Pulling back the sleeve
Connection Under Pressure	Pulling back the sleeve
Disconnection Under Pressure	Not Allowed
Upon Request	VITON & High temperature resistant special spring (-30 °C & +225 °C)
Applications	Agriculture, aviation, construction, production, national defense, mobile hydraulic, trailer trucks

Important Note:

To avoid cracking of the quick coupler, only use fittings with BSP thread on male and female parts of coupler.

NPT thread will damage your coupler because of the heat treatment of the individual parts.





Technical Specifications

(Code)	(Thread Size) F	(Working Pressure) Bar	(Dimensions) - mm					
			A	B	C	D	E1	E2
QCBPCG14SN	1/4" BSP	350	74,50	55	19,50	30	19	22
QCBPCG38SN	3/8" BSP	330	80,50	60,50	20	36	22	27
QCBPCG12SN	1/2" BSP	320	92	68	24	38	27	30
QCBPCG34SN	3/4" BSP	280	111	83	28	47	36	38
QCBPCG1SN	1" BSP	250	132,50	100	32,50	56	41	46
QCBPCG114SN	1 1/4" BSP	230	150,50	117	33,50	69	50	55

Flow Rate / Pressure Drop Table

(Code)	(Thread Size)	Basınç Değişimi (Pressure Drop) - Δp		
		1 Bar	2 Bar	5 Bar
QCBPCG14SN	1/4" BSP	15	22	35
QCBPCG38SN	3/8" BSP	25	38	70
QCBPCG12SN	1/2" BSP	50	70	135
QCBPCG34SN	3/4" BSP	90	150	210
QCBPCG1SN	1" BSP	156	210	360
QCBPCG114SN	1 1/4" BSP	215	320	580

